

13. Guarantee

WALMER tile cutters are covered by the manufacturer's warranty under the following conditions:

a) the warranty is granted for the period of:

- 12 months from the date of purchase for professional or comparable with professional use,
- 24 months from date of purchase for consumer use.

The warranty period begins at the time of purchase by the first user, being decisive is the date on the original purchase receipt.

b) the warranty covers only damage resulting from hidden manufacturing or material defects only if:

- the device has been used in accordance with the operating and intended use instructions and properly maintained,
- accessories recommended by the manufacturer were used,
- the device has not been disassembled or modified.

c) damage resulting from overloading the tool due to excessive and/or misuse.

d) The warranty does not cover the replacement of naturally wearing parts, including knives, bearings, springs - unless their wear resulted from hidden manufacturing and material defects.

The basis for recognizing a complaint under the warranty is the following form correctly filled in by the seller **WARRANTY CARD** with proof of purchase (invoice or receipt) and a legible signature of the user. The warranty card must contain the name and address of the seller (stamp).

14. Warranty claim

Warranty repairs in Poland are carried out only by the manufacturer. In case of finding the instrument together with the above-mentioned documents must be delivered or shipped (at the expense and risk of the recipient) to the address:

**WALMER Wola Zdakowska 32B,
39-307 GAWŁUSZOWICE**

Repair information:
e-mail: walmer@walmer.com.pl
fax: (17) 584 00 47
phone: (17) 584 16 08
service: 723 101 060
Made by WALMER benefits warranties do not result in an extension or warranty renewal.

User's signature

Without the signature of the guarantee warranty is not granted

WARRANTY CARD WALMER

MODEL:

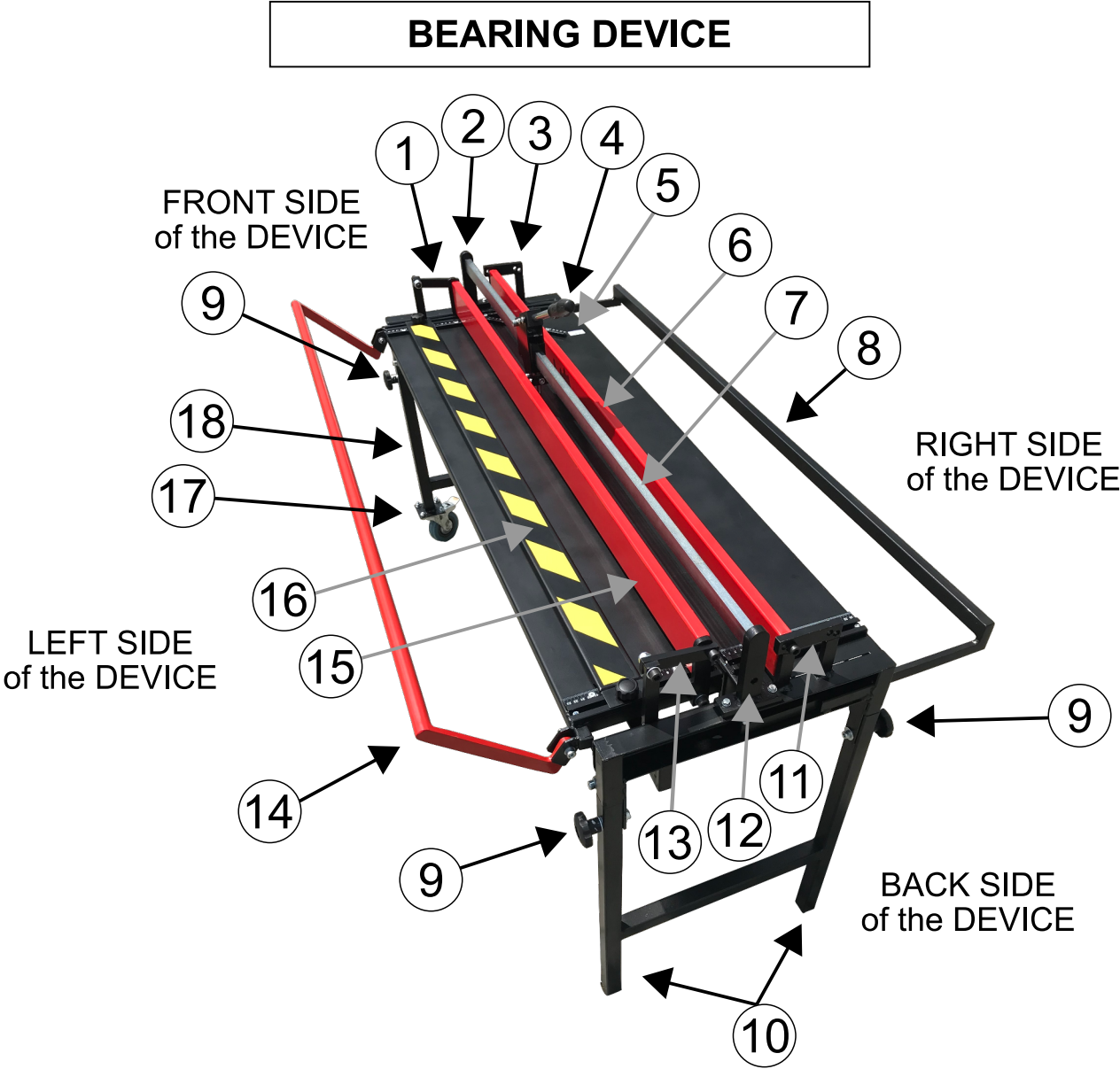
SALE DATE:

SELLER STAMP:

REPAIR NOTES

Report date Type of fault	Description of service activities	Repair date Stamp and signature

ATTENTION! PLEASE READ THIS INSTRUCTIONS BEFORE USE
AND INSTRUCTIONAL VIDEO AVAILABLE ON THE WEBSITE
www.walmer.com.pl



MAXIMUM CUTTING LENGTH: 1280mm

1. Left-upper bracket of the left skid

2. Front guide bracket

3. Right-upper bracket of the right skid

4. Feed lever

5. 45° degree small ruler stick

6. Right skid

7. Single guide bar

8. Base supporting larger tiles

9. Knob for folding the legs
10. Rear legs (immobile)

11. Right-lower bracket of the right skid

12. Rear support of the guide with a hole for easy replacement of the cutting blade

13. Left-lower skid support

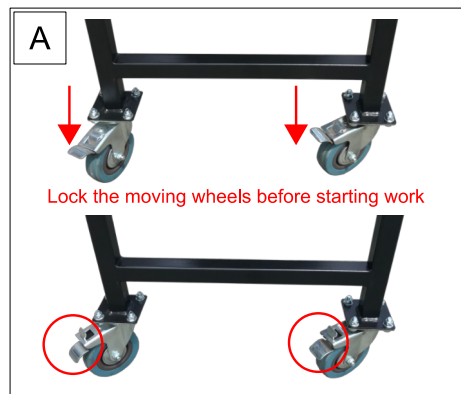
14. Breaking lever

15. Left skid

16. Ruler stick (black and yellow band)

17. A wheel at the foot

18. Front legs (with turning wheels)



1. General rules for safe work with the device

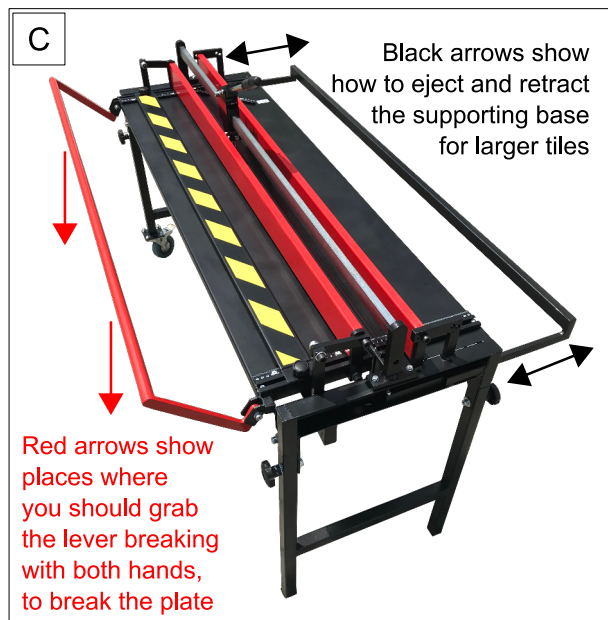
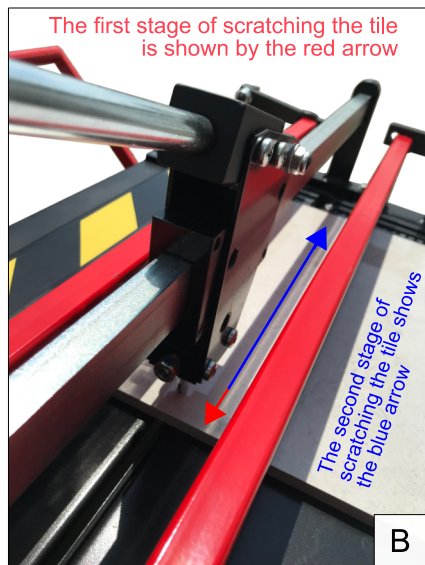
- Always place the device on a straight and stable surface before using it:
 - it is forbidden to use the device by placing it on inclined planes, on stairs and other surfaces where the level of the axis of the device on one side would be different than on the other,
 - it is not allowed to use the device on sand, gravel and similar loose surfaces.
- Lock the wheels using the brakes (see photo A):
 - it is forbidden to use the device with unlocked wheels, because it may cause unwanted movements and moving the device relative to its original setting.
- The device should be operated with work gloves.
- Do not put your hands in the cutting path of the machine's blade, as this may cause injury.
- The device is not intended for cutting wood, metal, glass, plastics.
- It is forbidden to use the device by children.

2. Preparation for cutting tiles

- Prepare the tiles you want to cut.
- Try the movement of the knife in the device first "dry" without the tile - you will feel it then how the device behaves,
 - lift the feed lever up and down several times,
 - move the feed lever back and forth several times,
- Check on a small strip of the tile whether you are able to scratch it and break it,
 - if this is your first contact with this device model, watch a short instructional video on the website www.walmer.com.pl (in the SERVICE > VIDEOS tab) showing all the stages of correct operation,
 - check whether the scratched scratch is perfectly straight,
 - if you find that the scratch is crooked, check the correct setting of the cutting knife (go to point 11. Replacing the cutting knife)

3. Cutting (scratching) the surface of the tile

- place the tile where you want to cut it,
- start drawing a scratch on the surface of the tile (see photo B),
- first, retract the cutter advance lever to draw a scratch about 1 cm long close to it tile edge:
 - this will prevent unwanted chipping of the plate when you try to break it,
- after scratching the beginning of the tile, move the feed lever forward to scratch its remaining length,
- make sure that the resulting scratch runs along the entire length of the tile, also at its ends,
- the tile is ready to break.

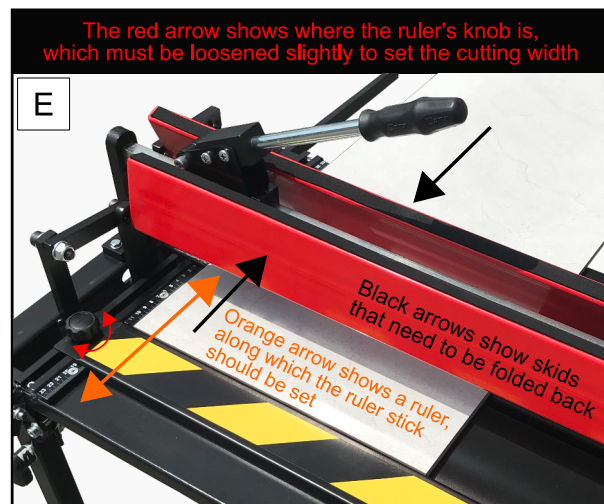
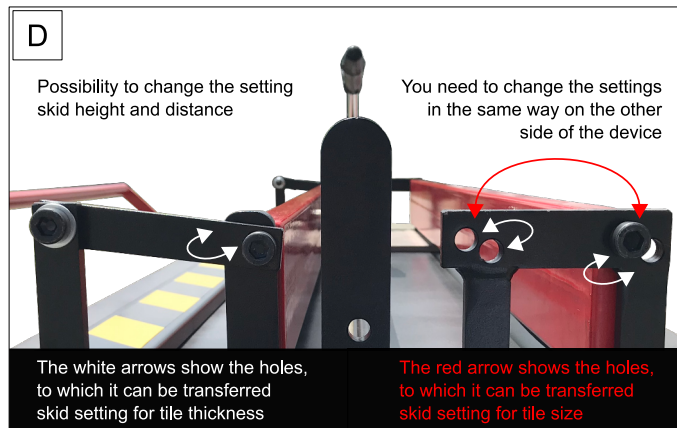


4. Breaking the tile

- after scratching the surface of the tile, it must be broken into two parts (see photo C),
- the breaking base (red skid by the guide) is on the side of the breaking lever,
- make sure that the breaking base adheres to the tile along its entire length,
- bring the breaking lever towards you, grab it with both hands shoulder-width apart,
- lower the breaking lever (use the same force in each hand at both ends of the lever),
- at first you will feel the resistance of the tile,
- lower the breaking lever down until the tile breaks,
- after breaking the plate, lift the skid at the guide and remove the broken plate.

5. Changing the height of the skids holding the tile when breaking

- There are two skids to press the plate to break it (see photo D):
- red pressure skid on the side of the base supporting larger tiles (on the right side of the device - black pull-out),
 - red pressure skid on the side of the tile breaking lever. Each of the skids has two available height settings for thinner and thicker tiles.
- In addition, the skid on the side of the base supporting larger tiles has two available positions for tiles with smaller and larger dimensions. In order to transfer the skids, the holes in the side supports are used:
- unscrew the M10x50 screw at both ends of the skid with the M8 Allen key,
 - insert the pressure skid into the adjacent holes (also on both sides):
 - check that the new setting matches the thickness and size of your tile,
 - insert the M10x50mm screws into the new hole positions:
 - first at the front and then at the same level at the back of the device:
 - the skid cannot be placed in the lower hole at the front of the device, and in the upper hole in the back (and vice versa),
 - always put the skid in both lower holes or in both upper ones,
 - tighten the M10x50mm screws with the M8 Allen key,
 - your machine is ready to cut the tile.



6. Setting the width to which the tile will be cut

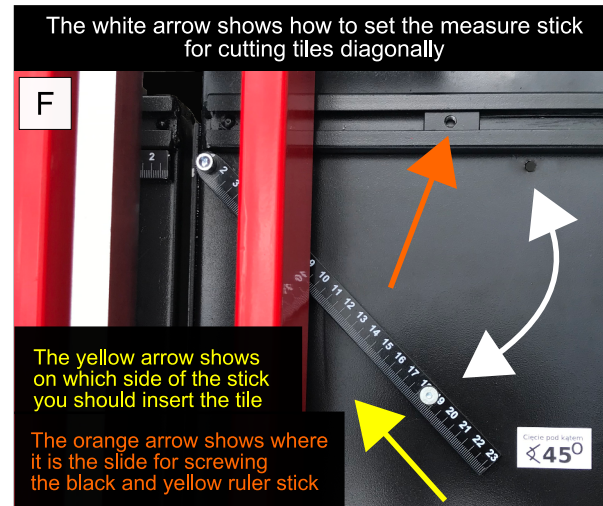
- The ruler stick (black and yellow band) is used to set the cutting width (see photo E).
- Ruler stick can be placed both on one and on the other side of the device. The choice of setting depends on the current needs of the user:
- loosen the screws on both sides of the ruler stick,
 - by moving the ruler stick, set the scale on both sides to the desired width,
 - tighten each of the two screws on both sides of the ruler stick,
 - check if both on one side and on the other side of the ruler stick you tightened the screw on the same scale indication,
 - make sure the ruler stick is stationary,
 - your machine is ready to cut the tile to the specified width.

7. Setting the cutting angle

- Before starting to set the angle, unscrew the black and yellow ruler stick and set aside.
- unscrew the movable gauge on the right side of the device to set the cutting angle:
 - use the knob under the table of the device for this purpose (if it is screwed too tight, loosen the screw holding the measure on the table with an M2.5 Allen key),
 - turn the ruler down to the hole marking the angle of 45° (see photo F),
 - tighten the knob (or insert a screw and tighten it),
 - your machine is ready to cut the tile diagonally.

8. Cutting large format tiles

- to rest the plate on the device, slide the support base out of the rails, (see photo C on the previous page)
- set the black support base on the desired width,
- the machine is ready to cut a large tile.

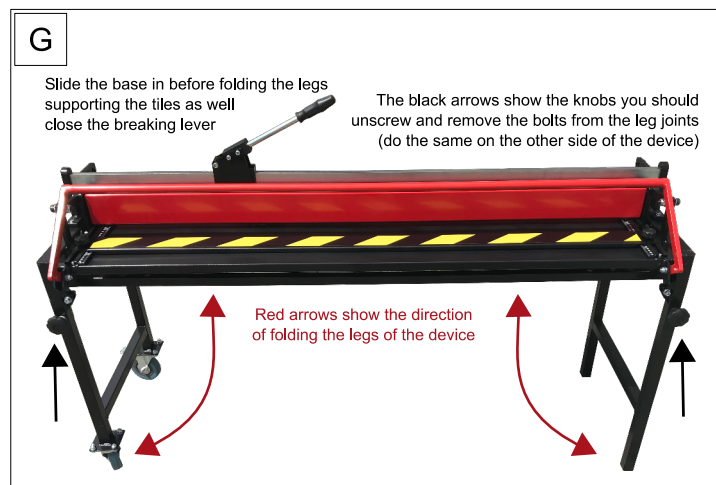


9. Folding the legs of the device for transport

- Two people are required to fold the legs safely:
- before folding the legs, move the feed lever to the end of the cutting guide (to the rulers) at the legs with wheels,
 - to properly assemble the legs of the device, unscrew the 4 screws on their wrists (see photo G),
 - first, fold the legs with the wheels inside (this will ensure the safety of the device sliding down in the next step),
 - now fold in the legs without wheels,
 - the device is ready for transport.

10. Moving the ruler stick to the other side of the device

- To set the tile cut width on the other side of the machine:
- unscrew the screws holding the ruler stick on both sides,
 - move the ruler stick to the other side,
 - find in the recesses on both sides of the ankle (glides) with holes (orange arrow in photo F),
 - insert the screws into the holes on each side and tighten,
 - your device is ready to attach the plate.



11. Replacing the cutting knife

- drive the head to the side with the hole (see photo H):
 - access to the hole is in one of the sides of the device (with the rear fixed legs),
- lift the red skid up to have better access to the knife,
- loosen the M8x20mm screw at the blade with an M6 Allen key,
- take out the used knife,
- put on a new knife,
- set the blade so that it is parallel to the cutting line,
- tighten the new blade with the M8x20mm hexagonal screw (use the M6 allen key again),
- check the cutting knife on an old tile or an unused shard and make sure it is immobile in the head while cutting and does it cut straight,
- when a perfectly even scratch is formed, your device is ready to work again.

12. Spare parts and auxiliary tools

- When purchasing the device, the customer receives 1 piece of the device for cutting tiles and terracotta in the package:
- spare cutting knives described in the manual can be purchased from the manufacturer,
 - Allen keys described in the manual can be purchased at popular DIY stores.

